

Upgrade to SharePoint 2019 or Migrate to Office 365



Joel Oleson

Modern Workplace Architect

Joel365

Microsoft Regional Director & MVP

@joeloleson

Ingrid Camill

Modern Workplace Practice Manager

General Networks

icamill@gennet.com







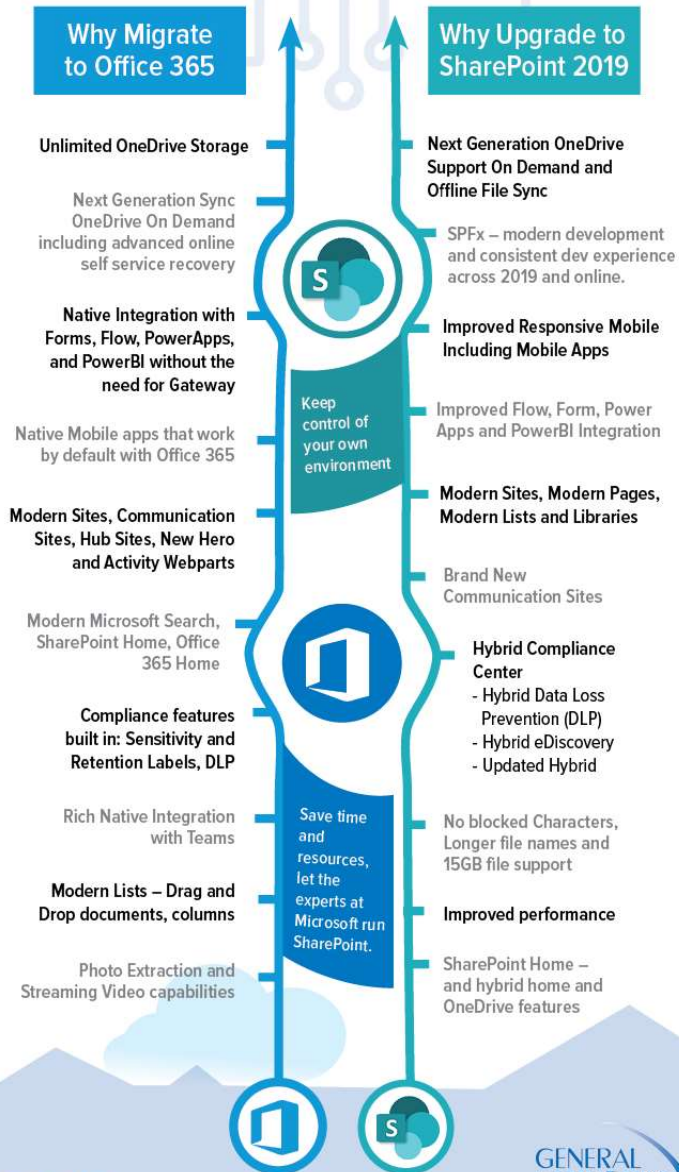
Poll Question: What version of SharePoint are you running?



Isn't SharePoint 2007, 2010, 2013,
or even 2016 *Good Enough*?

Office 365 or SharePoint 2019?

by Joel Oleson, Microsoft MVP @joeloleson



Agenda

- Why?
- The Business Value of Migration
 - SharePoint & Office 365 Infographic
- Users and Sharing Story - OneDrive
- Developer Story
- Modern UX
- Compliance
- AI and Machine Learning
- Wrap Up: Why stay on premises or why migrate to the Cloud?
- Expertise Considerations
- Q&A

Office 365 or SharePoint 2019?

by Joel Oleson, Microsoft MVP @joeloleson

Why Migrate to Office 365

Unlimited OneDrive Storage

Next Generation Sync OneDrive On Demand including advanced online self service recovery

Native Integration with Forms, Flow, PowerApps, and PowerBI without the need for Gateway

Native Mobile apps that work by default with Office 365

Modern Sites, Communication

Why Upgrade to SharePoint 2019

Next Generation OneDrive Support On Demand and Offline File Sync

SPFx – modern development and consistent dev experience across 2019 and online.

Improved Responsive Mobile Including Mobile Apps

Improved Flow, Form, Power Apps and PowerBI Integration

Modern Sites, Modern Pages, Modern Lists and Libraries

Keep control of your own environment

by default with Office 365

your own environment

Modern Sites, Communication Sites, Hub Sites, New Hero and Activity Webparts

Modern Sites, Modern Pages, Modern Lists and Libraries

Brand New Communication Sites

Modern Microsoft Search, SharePoint Home, Office 365 Home



Hybrid Compliance Center

- Hybrid Data Loss Prevention (DLP)
- Hybrid eDiscovery
- Updated Hybrid

Compliance features built in: Sensitivity and Retention Labels, DLP

Rich Native Integration with Teams

Save time and resources, let the experts at Microsoft run SharePoint.

No blocked Characters, Longer file names and 15GB file support

Modern Lists – Drag and Drop documents, columns

Improved performance

Photo Extraction and Streaming Video capabilities

SharePoint Home – and hybrid home and OneDrive features



Joel Oleson, MVP
Microsoft Regional Director @joeloleson
Like this? Find more at collabshow.com



Your SharePoint & Office 365 Migration Experts



The User Story: OneDrive in SharePoint 2019 and Office 365

OneDrive Unlimited Storage

OneDrive Malware Protection

OneDrive Recovery

OneDrive on Demand

Simplified Sharing

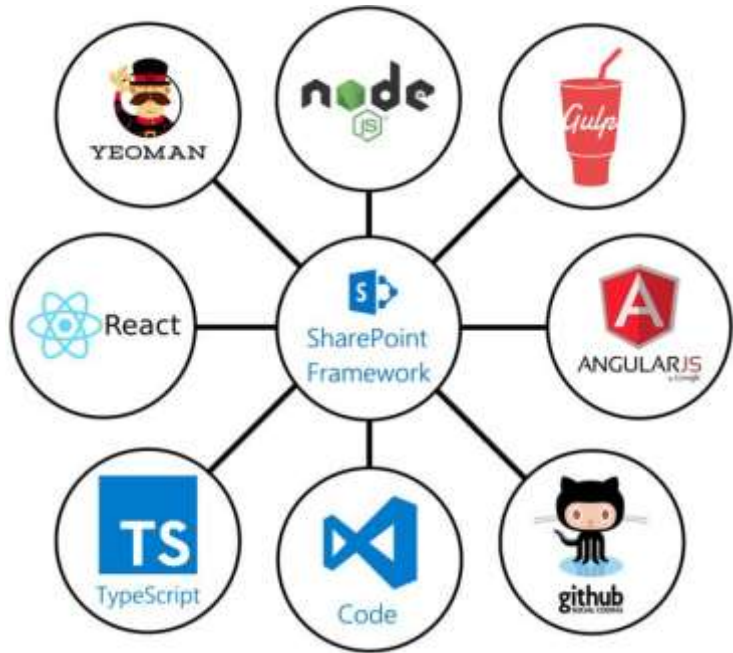
OneDrive NSC

OneDrive Windows 10 Policies

OneDrive Mac

SharePoint Developer Story=Framework

<https://developer.microsoft.com/en-us/sharepoint>



The **SharePoint Framework** (SPFx) is a page and web part model that provides full support for client-side **SharePoint** development

- Write once deploy on prem or to the cloud.
- Rich Development community
- JavaScript Frameworks that you LOVE: React, Handlebars, Knockout, Angular, and more.
- Open source client development tools such as node.js, npm, TypeScript, Yeoman, webpack, and gulp.
- Supports SharePoint 2016 Feature Pack 2 and SharePoint 2019 & Microsoft Teams



<https://docs.microsoft.com/en-us/sharepoint/dev/spfx/sharepoint-framework-overview>

Mobile Apps, Responsive UX



SharePoint 2019

- Updates to work with Mobile Apps and New Responsive Mobile UX

Office 365 improvements

- Mobile Search, Mobile Official News, improvements, Modern Search



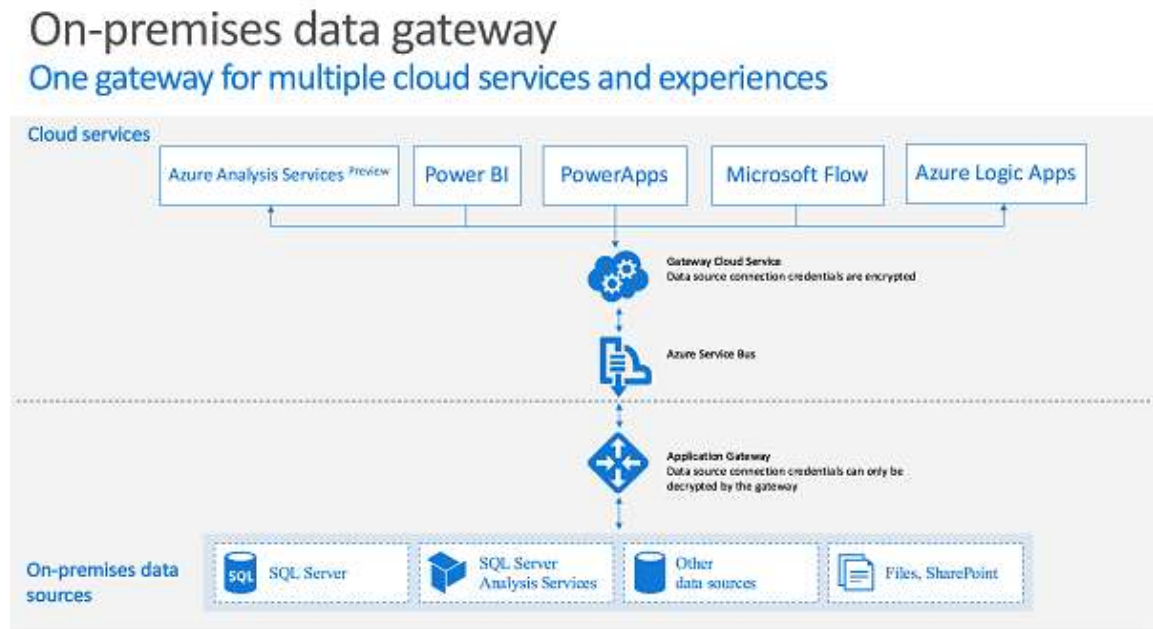
Forms, Flow, PowerApps, Power BI – Cloud Powered, Gateway Integrated

SharePoint Server 2019 includes process automation and forms technologies like PowerApps and Flow to connect with your on-premises data. These features need to be configured via gateway.

Apps, Forms, Workflows and Tools of Office 365
What to Use When?
by @JoelOleson, MVP Office Apps & Services

- MICROSOFT FORMS**
 - Survey
 - Quizzes
 - Polls
- MICROSOFT FLOW**
 - Triggers
 - Actions
 - Conditions
- POWER APPS**
 - Web UX
 - Studio Edit Controls
 - Mobile UX
- POWER BI**
 - Visualizations
 - Datasets
 - Reports
 - Dashboards

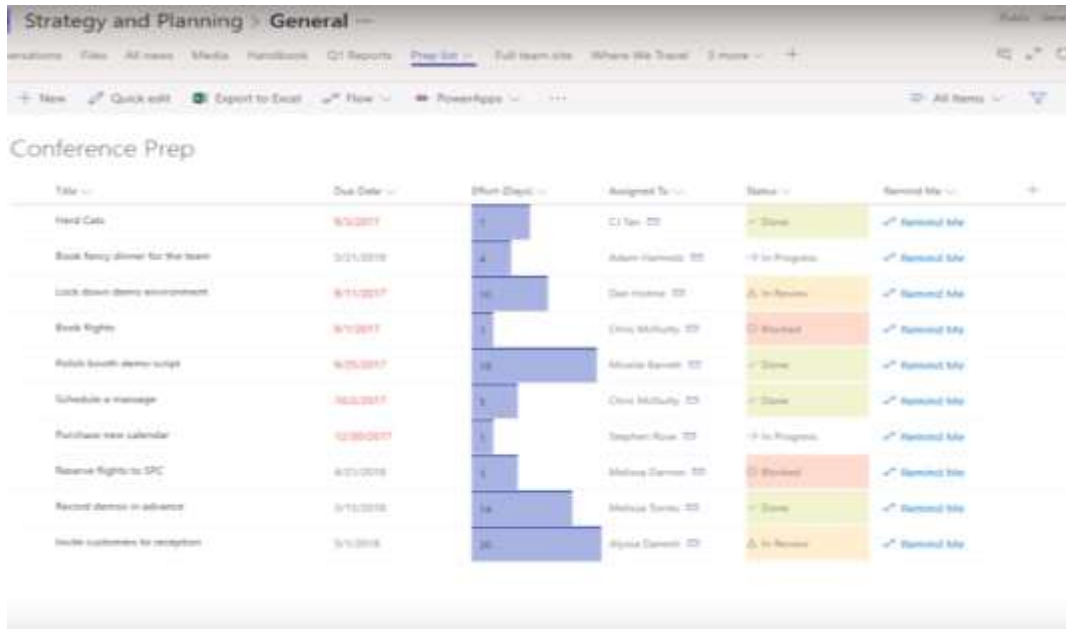
Office 365 Power Tools



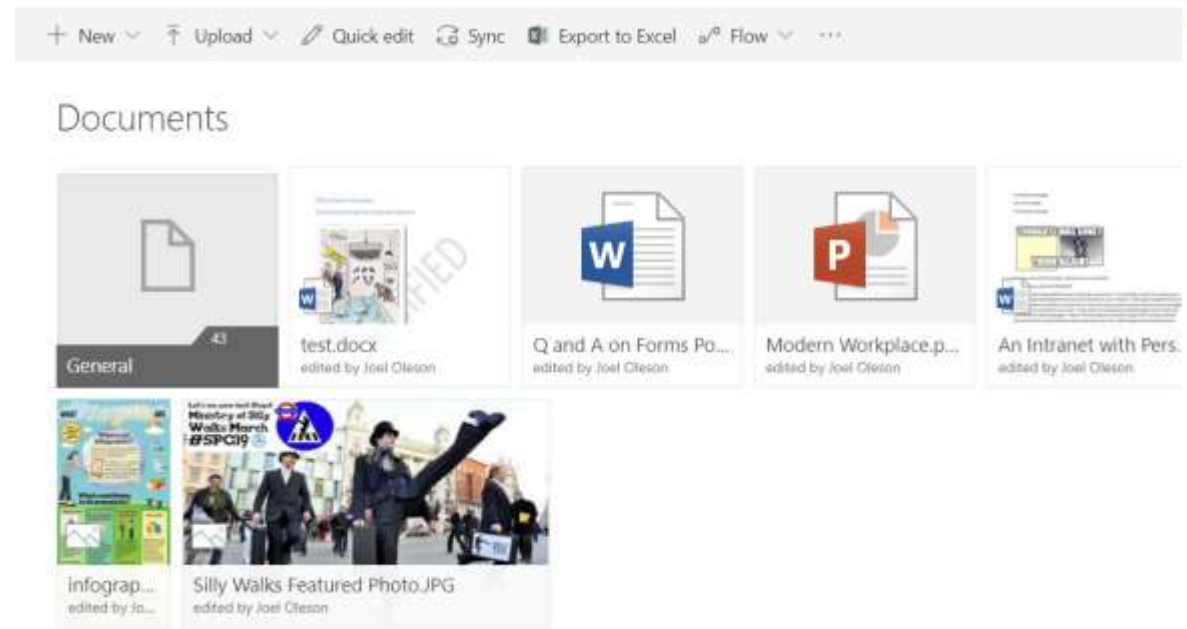
Online Tool Gateways
integrate better with 2019

Modern Sites, Pages, Lists, Libraries and Webparts

- Modern Team Sites & Communication sites
- Modern Lists
 - Drag and drop documents
 - New Webparts: Activity, Hero
- Modern Pages
- Drag and drop columns
- List extensions



Title	Due Date	Effort (Days)	Assigned To	Status	Shared With
Send Calc	6/3/2017	1	Cl Ten	Done	Removed file
Book fancy dinner for the team	3/1/2018	4	Adam Harris	In Progress	Removed file
Lock down demo environment	6/1/2017	10	Dan Hester	In Review	Removed file
Book flights	6/1/2017	1	Eric McHenry	Blocked	Removed file
Rollin South demo script	6/2/2017	10	Melissa Santos	Done	Removed file
Schedule a manager	6/2/2017	5	Clay McHenry	Done	Removed file
Purchase new calendar	12/30/2017	1	Stephen Rose	In Progress	Removed file
Reverse rights to SPIC	4/1/2018	1	Melissa Santos	Blocked	Removed file
Record demo in advance	3/1/2018	14	Melissa Santos	Done	Removed file
Invite customers to reception	3/1/2018	10	Alisa Daniels	In Review	Removed file



List extensions
<https://github.com/SharePoint/sp-dev-fx-extensions>

Modern List

Machine learning & AI in Office 365

(much of these will NOT go to 2019+)

Automation of
Transcription of
Audio and Video
Files

Share
Enhancements Block
Download, Cross
Org sync in Sharing
of Files

Client Side
Extensions, for Lists
and Libraries*

Extensible and
extractable Location
column data for
GPS, Maps

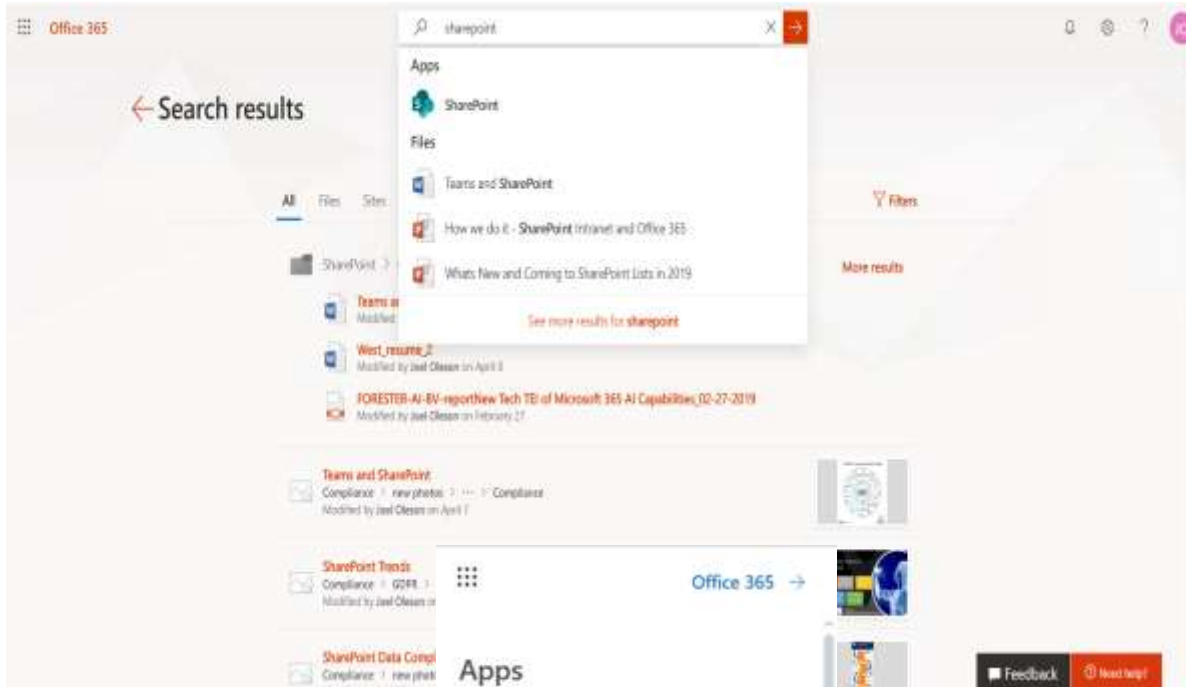
Search
Enhancements to
Lists, extensibility,
promoted links

Flow & Stream
integrations for
Speech to text

Facial Detection

Video Language files
support

Office & SharePoint Home Microsoft Search

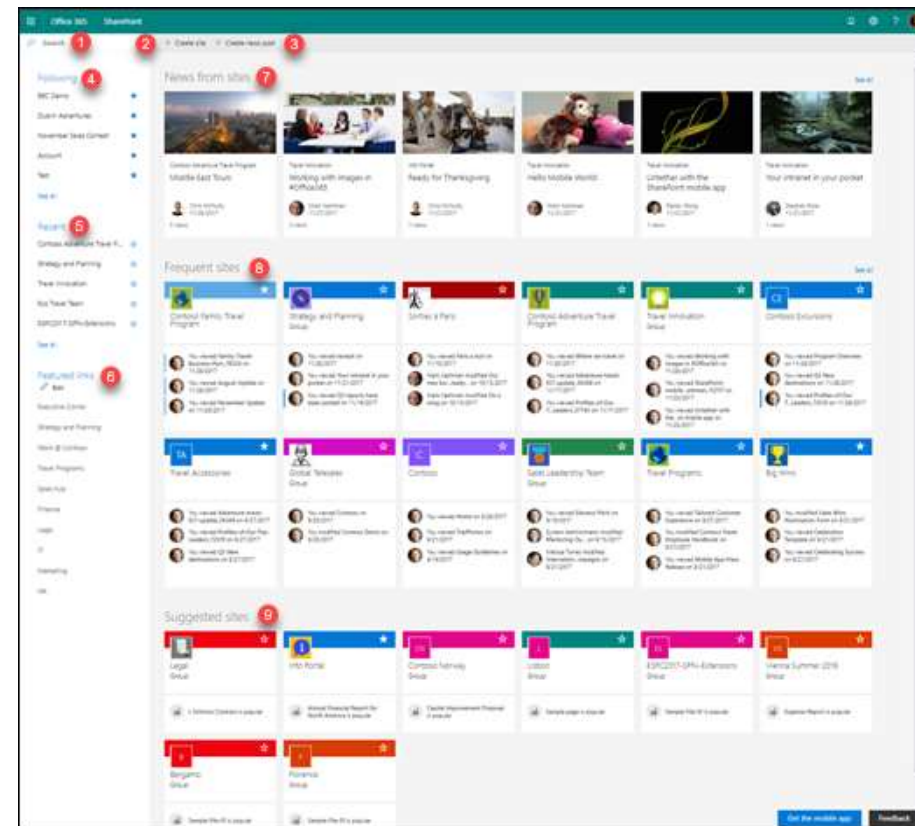


Office 365

- Office 365 home
- Microsoft Search

SharePoint 2019

- SharePoint Home
- Suite Nav Bar and App Launcher



Office 365 & Hybrid Compliance

Data Loss Prevention
File Plans
Retention Labels
Sensitivity Labels
Site Classification
Labeling

The screenshot shows the Office 365 Security & Compliance center interface. The browser address bar displays <https://protection.office.com/taglibrary>. The page title is "Office 365 Security & Compliance". The left navigation pane includes: Home, Alerts, Permissions, Classifications, Data loss prevention, Data governance, Supervision, Threat management, Mail flow, and Data privacy. The main content area is titled "Home > Labels" and has two tabs: "Sensitivity" and "Retention". Below the tabs, there is a descriptive paragraph: "When published, labels appear in your users' apps, such as Outlook, SharePoint, and OneDrive. When a label is applied to em based on the settings you chose. For example, you can create labels that retain content for a certain time or ones that simply retention labels". Below this text are four buttons: "+ Create a label", "Publish labels", "Auto-apply a label", and "Refresh", followed by a search box. A table below the buttons lists existing labels:

<input type="checkbox"/>	Name	Created by	Retention period
<input type="checkbox"/>	Finance data	Joel Oleson	7 years
<input type="checkbox"/>	GDPR data	Joel Oleson	1 year
<input type="checkbox"/>	Legal	Joel Oleson	7 years

Improved File Experience:

Removed Blocked Characters and Increased File length

Formerly: "#%&*:<>?\ / { | } ~ ..

Most of the characters blocked in 2013. SP2016 removed all non windows except # and %.

SharePoint Online (SharePoint for Office 365) and SharePoint 2019 support the special characters # and %

Rename

"file..name.docx"

.jpg

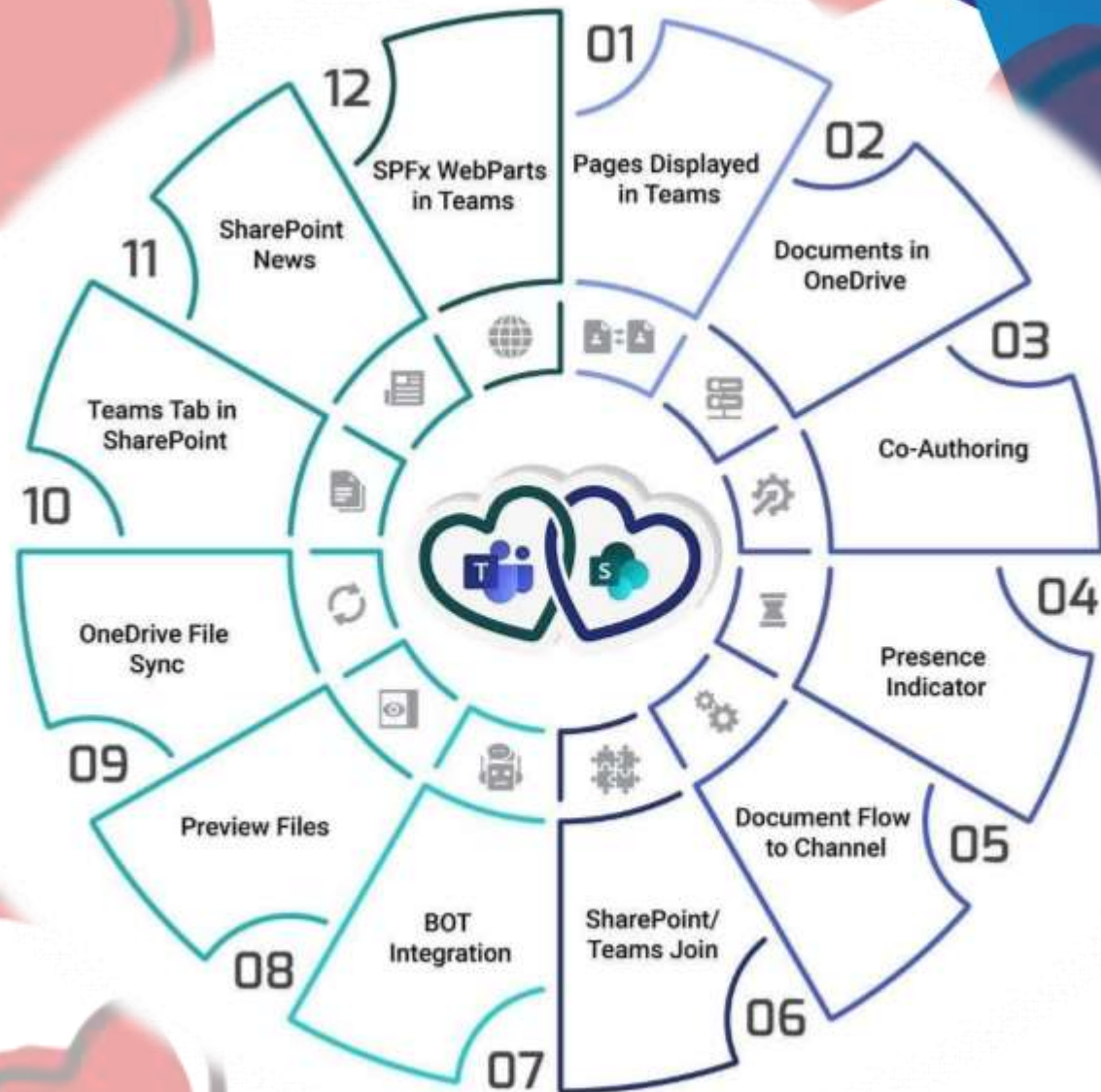
The file or folder name ""file..name.docx"" contains invalid characters. Please use a different name. Valid file or folder names cannot begin or end with a dot and cannot contain any of the following characters: " * : <>? / \ | .

Save



Teams online uses SharePoint Online for storage and a whole lot more...

This love is a lasting one...





Poll Question: What is your time frame for upgrading or migrating to new version of SharePoint?

Why Might One Stay on Premises?

- Managing your own destiny
 - Poor or slow bandwidth links to the Internet
 - Keeping the crown jewels close
 - Extensive customizations and legacy third party solutions or legacy applications
 - Concerns over owning your own destiny.
- More secure? Is that a Myth?



Microsoft SharePoint servers are under attack

Canadian and Saudi cybersecurity agencies warn of attacks that have been going on for at least two weeks

By Catalin Cimpanu for Zero Day | May 30, 2019 — 17:33 GMT (10:33 PDT) | Topic: Security

Why Migrate to Office 365?

<https://www.zdnet.com/article/microsoft-sharepoint-servers-are-under-attack/>

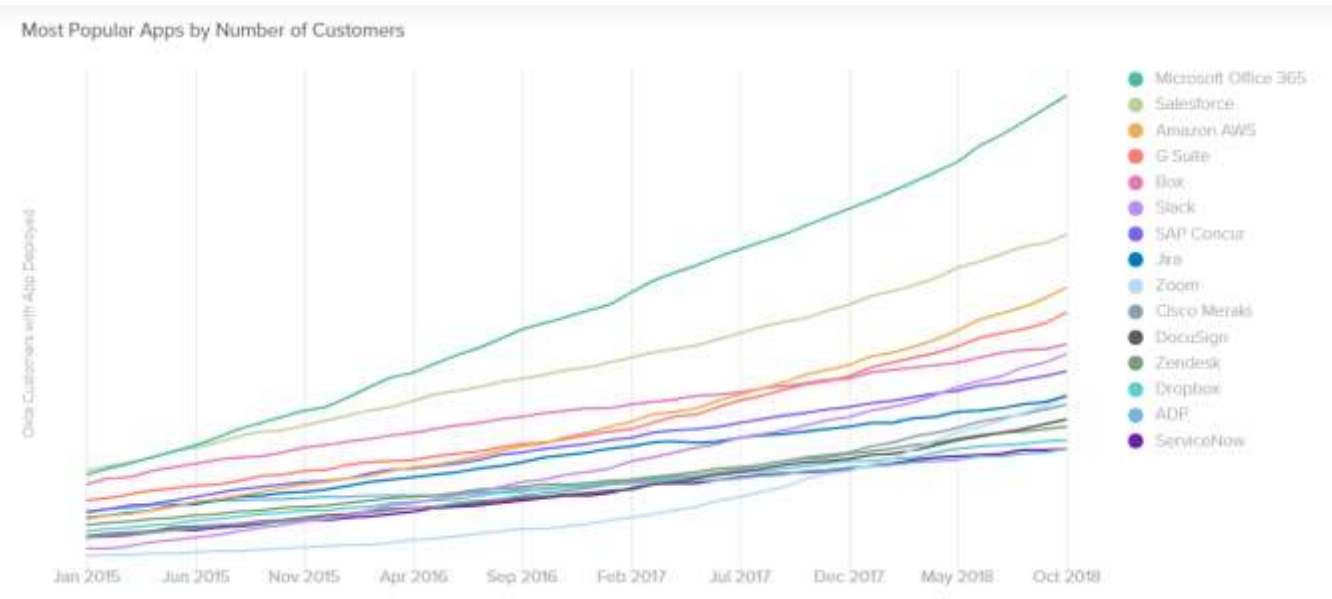
Always patched. Always up to date.

Microsoft Managed Services & Infrastructure

Latest features; first release

Premium Cloud Only service

Guaranteed or paid SLA





Poll Question: Where are you in your migrate/upgrade decision?

Why Use a Partner?

You're nearly twice as likely to be successful with using expert help...

Chances are they've seen it before...

Four biggest challenges to success:

- 1) Lack of Expertise
- 2) Lack of Vision
- 3) Poor User Adoption
- 4) Lack of Governance

SharePoint secret to success: **experience!**

63% of those struggling, stalled and failing report they relied only on internal resources

You are nearly **twice** as likely to be successful when you get help from specialist consultants with the right **strategy and SharePoint expertise**

Checklist: Revitalize your SharePoint!

- Re-engage users
- Establish governance
- Create vision & execute
- Get expert help & advice

aim
The Global Community of Information Management Professionals

AIM (www.aim.org) is the global community of information management professionals. We are the only organization that provides a global network of information management professionals.

GENERAL NETWORKS CORPORATION



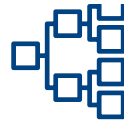
FOUNDED 1984

SharePoint Services provided since 2007 –located in Glendale, CA



VALUE FOCUSED

We put value first in everything that we do



65+ TEAM MEMBERS

Focused on specialization and expertise in technology



2+ MILLION SUPPORTED

Global users of systems built and supported by our consultants



5 DIVISIONS

SharePoint, Infrastructure, ECM, Data Analytics & ServiceNow



CLIENT/PARTNER FOCUS

60% of our revenue comes from customers with us for 10+ years



Your SharePoint and Office 365 Migration Experts

Is a move to SharePoint Online or SharePoint 2019 on your roadmap?

Start your project off right with a solid plan!

Contact General Networks to get started with your **SharePoint Upgrade/Migration Assessment and Roadmap Planning Engagement.**

<https://gennet.com/2019-or-online-sp-migration/>



Gold
Microsoft Partner





Poll Question: How can we help you?

Call to Action... Questions?

Plan your upgrade strategy...

SharePoint
Upgrade/Migration
Assessment and
Roadmap Planning

- <https://gennet.com/2019-or-online-sp-migration/>



Let's Connect

Slides: [Slideshare.net/joeloleson](https://www.slideshare.net/joeloleson)

[linkedin.com/in/joeloleson](https://www.linkedin.com/in/joeloleson)

[Twitter.com/joeloleson](https://twitter.com/joeloleson)

[Youtube.com/joeloleson](https://www.youtube.com/joeloleson)

[Collabshow.com](https://www.collabshow.com) & [TravelingEpic.com](https://www.TravelingEpic.com)

joel@joel365.com

